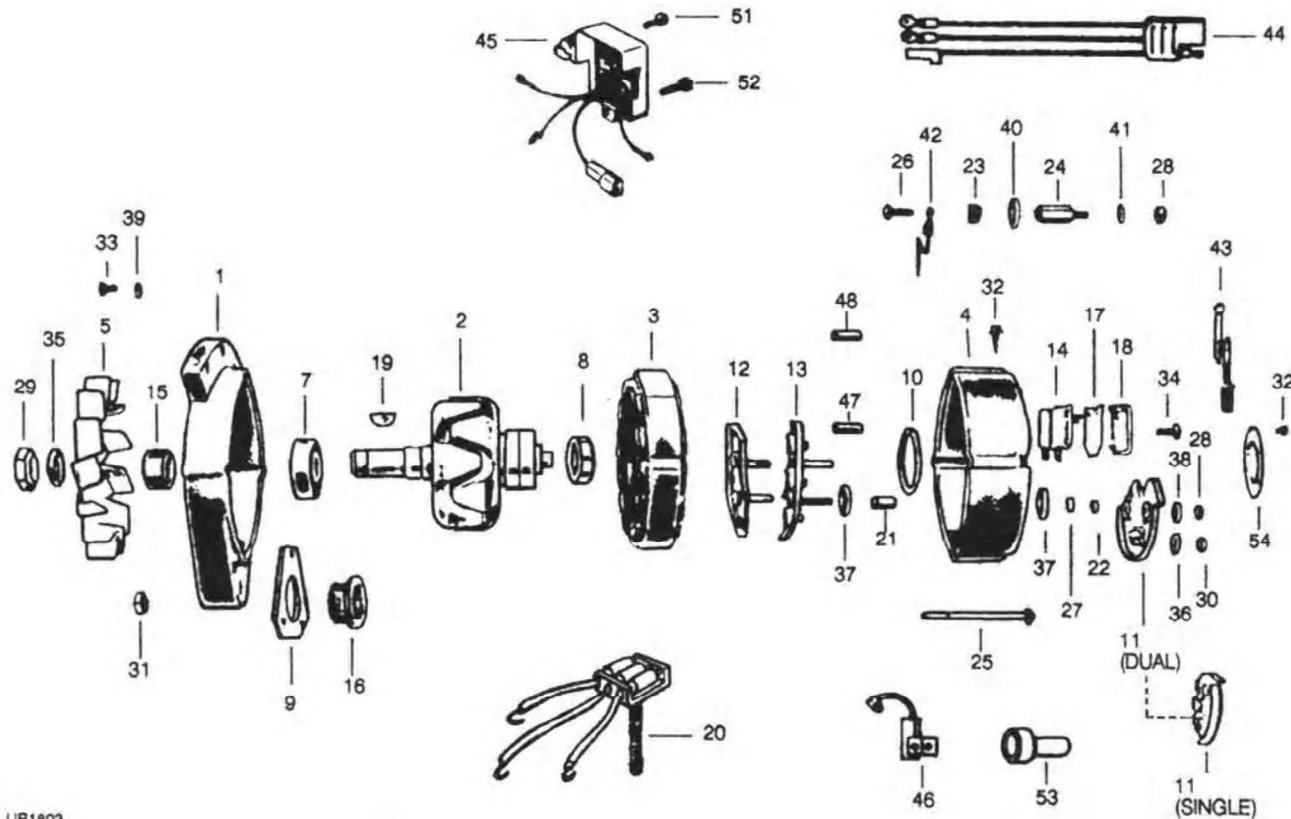


GROUP:	7
FORM:	125-94AE
FILE:	Alternator Parts List Section
DATE:	September, 1988

MODEL	VOLTS	AMPS
Various See Chart		

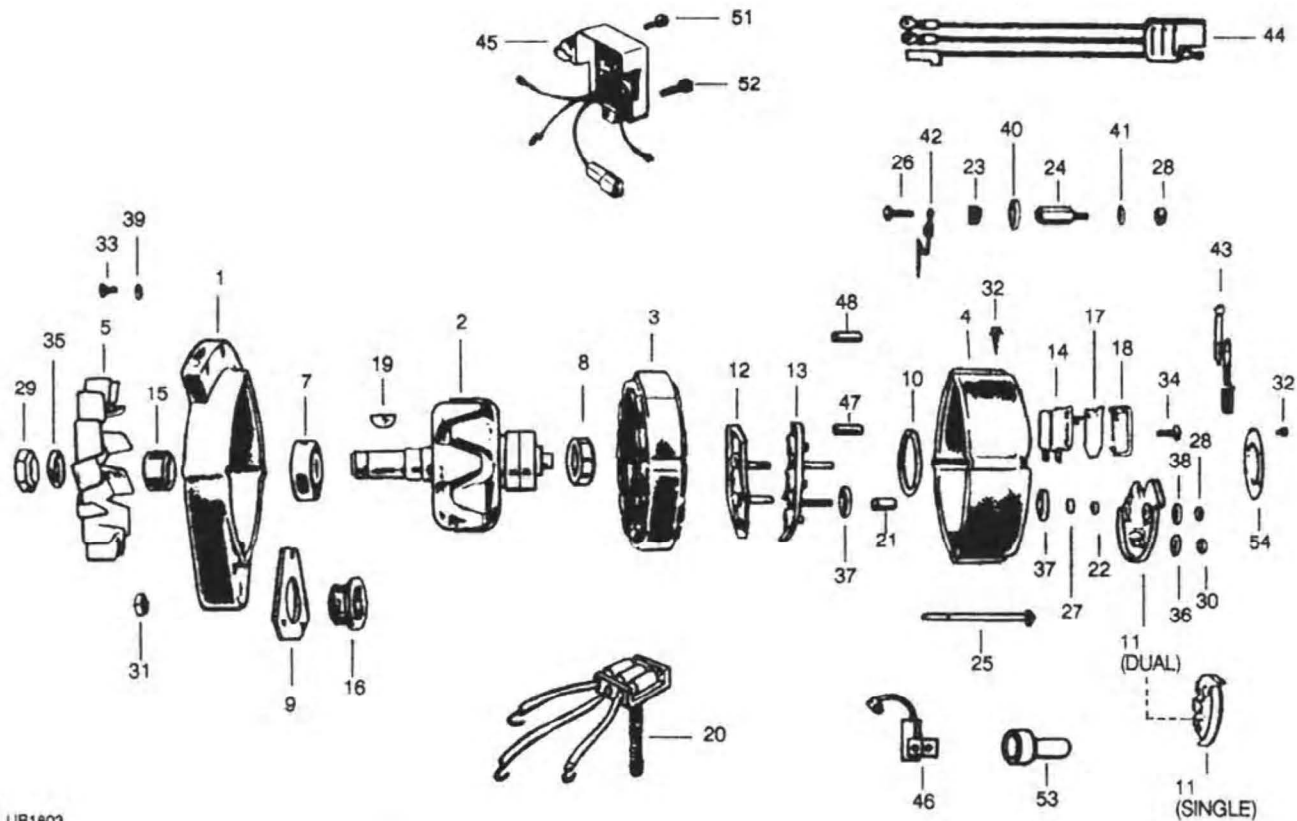


UB1803

MODEL NO.	SALES NO.	1 HSNG FRONT	2 ROTOR ASSEM	3 STATOR ASSEM	4 HSNG REAR	5 FAN	6 PULLEY	7 BRNG FRONT	8 BRNG REAR	9 FR.BRNG RET.	10 R.BRNG RET.	11 ISOLA. DIODE	12 HEAT SINK, NEG
8HA2001L	110-142	114-16	112-12	113-9	114-64	107-41		111-40	111-43	111-27	111-25		101-52
8HA2002G		114-16	112-1	113-2	114-18	107-8		111-40	111-23	111-27	111-25	101-30	101-2
8HA2003F	110-159	114-90	112-1	113-1	114-18	107-8		111-40	111-23	111-27	111-25	101-7	101-2
8HA2004G		114-90	112-2	113-2	114-18	107-8		111-40	111-23	111-27	111-25	101-30	101-2
8HA2005K		114-90	112-2	113-19	114-18	107-8		111-40	111-23	111-27	111-25	101-30	101-2
8HA2006F	110-225	114-90	112-1	113-1	114-18	107-8		111-40	111-23	111-27	111-25	101-7	101-2
8HA2008F	110-303	114-90	112-1	113-1	114-98	107-8		111-40	111-23	111-27	111-25		101-126
8HA2009K	110-304	114-90	112-2	113-19	114-98	107-8		111-40	111-23	111-27	111-25		101-126
8HR2002L		114-107	112-29	113-9	114-98	107-44		111-40	111-23	111-27	111-25		101-126

Important: The information contained in this bulletin is intended for use by trained, professional technicians who have the proper tools, equipment, and training to perform the required maintenance described above. This information is NOT intended for 'do-it-yourselfers', and you should not assume that this information applies to your equipment. If you have any questions regarding this information please visit our website at www.prestolite.com, or contact our technical service department at:

GROUP:	7
FORM:	125-94AE



MODEL NO.	SALES NO.	13 DIODE RECT, POS	14 BRUSH ASSEM	15 FAN SPACER	16 SLEEVE SHAFT	17 SHIELD DUST	18 COVER BRUSH	19 KEY WDRFF	20 DIODE TRIO	21 SLEEVE INSUL.	22 SLEEVE INSUL.	23 INSUL. MOLDED	24 ADAPT OUTPUT
8HA2001L	110-142	101-1	103-16	120-123		103-13	103-5	120-53		115-1		115-7	116-66
8HA2002G		101-1	103-15	120-147	120-89	103-13	103-6	120-7		115-1	115-2		
8HA2003F	110-159	101-1	103-15	120-147	120-89	103-13	103-6	120-7		115-1			
8HA2004G		101-1	103-15	120-147	120-89	103-13	103-6	120-7		115-1	115-2		
8HA2005K		101-1	103-15	120-147	120-89	103-13	103-6	120-7		115-1	115-2		
8HA2006F	110-225	101-1	103-15	120-147	120-89	103-13	103-6	120-7		115-1	115-2		
8HA2008F	110-303	101-171	103-15	120-147	120-89	103-13	103-6	120-7	101-130	115-26		115-7	
8HA2009K	110-304	101-171	103-15	120-147	120-89	103-13	103-6	120-7	101-130	115-26		115-7	
8HR2002L		101-95	103-15	120-147	120-89	103-13	103-6	120-7		115-26		115-7	

Important: The information contained in this bulletin is intended for use by trained, professional technicians who have the proper tools, equipment, and training to perform the required maintenance described above. This information is NOT intended for 'do-it-yourselfers', and you should not assume that this information applies to your equipment. If you have any questions regarding this information please visit our website at www.prestolite.com, or contact our technical service department at:

SERVICE PARTS LIST

GROUP:	7
FORM:	125-94AE

[illegible]

Important: The information contained in this bulletin is intended for use by trained, professional technicians who have the proper tools, equipment, and training to perform the required maintenance described above. This information is NOT intended for 'do-it-yourselfers', and you should not assume that this information applies to your equipment. If you have any questions regarding this information please visit our website at www.prestolite.com, or contact our technical service department at: